

DIVERSIFIED HOSPITALITY
SOLUTIONS



Infusé® Lavender Mint Collection

We are pleased to offer the much anticipated Infusé® Lavender Mint Collection in elegant 1.25 oz bottles, which are made in the USA. Mild and nourishing with fresh aloe vera, this beautifully fragranced line has a calming feel on the skin and hair. Each salon-quality formulation in the collection is vegan friendly, paraben and gluten free and 100% biodegradable. Bring a level of sophistication to the space with the Infusé® Lavender Mint line of amenities.

INFUSÉ®



| ITEM | SKU # | CASE | ITEM | SKU # | CASE | ITEM | SKU # | CASE |
|--------------------------------------|-------------|------|---|-------------|------|--|-----------------|------|
| Shampoo – 1.25 oz/37 ml Bottle | INB50-S125 | 240 | Cleansing Bar – 20g Small Sachet | IN20-SCB100 | 400 | Gallon: Shampoo – 128 oz/3.79 L | GAL85-LAVM-S128 | 4 |
| Conditioner – 1.25 oz/37 ml Bottle | INB51-C125 | 240 | Cleansing Bar – 40g Large Sachet | IN22-SCB200 | 200 | Gallon: Conditioner – 128 oz/3.79 L | GAL86-LAVM-C128 | 4 |
| Lotion – 1.25 oz/37 ml Bottle | INB52-L125 | 240 | Massage Bar – 50g Large Sachet | IN24-SMB50 | 200 | Gallon: Hand & Body Wash – 128 oz/3.79 L | GAL88-LAVM-W128 | 4 |
| Body Wash – 1.25 oz/37 ml Bottle | INB53-W125 | 240 | Cleansing Bar – 35g Soap Box | IN30-BCB300 | 200 | Gallon: Lotion – 128 oz/3.79 L | GAL87-LAVM-L128 | 4 |
| Cond. Shampoo – 1.25 oz/37 ml Bottle | INB54-CS125 | 240 | Spa Collection Cleansing Bar – 30g Sachet | GS24-CB30 | 250 | | | |

(GS24 SACHET - Made in Italy)

TERRA PURE®

Terra Pure® Lemongrass Green Tea Collection

The Terra Pure® Lemongrass Green Tea line of amenities brings a touch of refinement and luxury to any space. The Made in the USA collection contains the purest ingredients and a light, fresh scent all in exquisite 1.0 oz PET bottles. Created with the environment in mind, all formulas are paraben and gluten free.



| ITEM | SKU # | CASE | ITEM | SKU # | CASE |
|-------------------------------------|-------------|------|---|---------------|------|
| Shampoo – 1.0 oz/30 ml Bottle | TPB50-S100 | 240 | Cleansing Bar – 20g Small Sachet | IN20-SCB100 | 400 |
| Conditioner – 1.0 oz/30 ml Bottle | TPB51-C100 | 240 | Cleansing Bar – 40g Large Sachet | IN22-SCB200 | 200 |
| Lotion – 1.0 oz/30 ml Bottle | TPB52-L100 | 240 | Massage Bar – 50g Large Sachet | IN24-SMB50 | 200 |
| Body Wash – 1.0 oz/30 ml Bottle | TPB53-W100 | 240 | Fresh Aloe Cleansing Bar – 35g Tissue Pleat | GS12-PLEAT125 | 288 |
| Cond. Shampoo – 1.0 oz/30 ml Bottle | TPB54-CS100 | 240 | | | |

Infusé® Collection

The earth conscious Infusé® collection features salon-quality formulations and a subtle White Tea & Coconut fragrance. The vegan friendly line is enriched with olive oil, aloe vera extract and pure coconut water. Our luxurious coconut & papaya bar soaps elegantly complement the line. Infusé®'s modern and sleek design with silver foil stamp logo brings a level of sophistication to the upscale guest room.

I N F U S É®



| ITEM | SKU # | CASE | ITEM | SKU # | CASE | ITEM | SKU # | CASE |
|------------------------------------|-----------|------|----------------------------------|-------------|------|--|-----------------|------|
| Shampoo – 1 oz/30 ml Tall Tube | IN01-S100 | 200 | Cleansing Bar – 20g Small Sachet | IN20-SCB100 | 400 | Gallon: Shampoo – 128 oz/3.78 L | GAL80-H2OTROP-S | 4 |
| Conditioner – 1 oz/30 ml Tall Tube | IN02-C100 | 200 | Cleansing Bar – 40g Large Sachet | IN22-SCB200 | 200 | Gallon: Conditioner – 128 oz/3.78 L | GAL81-H2OTROP-C | 4 |
| Lotion – 1 oz/30 ml Tall Tube | IN03-L100 | 200 | Massage Bar – 50g Large Sachet | IN24-SMB50 | 200 | Gallon: Hand & Body Wash – 128 oz/3.78 L | GAL82-H2OTROP-W | 4 |
| Body Wash – 1 oz/30 ml Tall Tube | IN04-W100 | 200 | Cleansing Bar – 35g Soap Box | IN30-BCB300 | 200 | Gallon: Lotion – 128 oz/3.78 L | GAL83-H2OTROP-L | 4 |

I N F U S É[®]
city

Infusé[®] City Collection

The perfect combination of modern finesse and sustainable style, the Infusé[®] City collection creates a refined ambiance in any space.

The EcoPure[®] biodegradable packaging shows your commitment to the environment, while the lavender mint fragrance transports your guests to a luxurious spa experience.



| ITEM | SKU # | CASE | ITEM | SKU # | CASE |
|------------------------------------|---------------|------|---|----------------|------|
| Shampoo – 1 oz/30 ml Tall Tube | INFB51-S100-2 | 200 | Conditioning Shampoo – 1 oz/30 ml Tall Tube | INFB55-CS100-2 | 200 |
| Conditioner – 1 oz/30 ml Tall Tube | INFB52-C100-2 | 200 | Cleansing Bar – 20g Soap Box | INFB13-CB400 | 400 |
| Lotion – 1 oz/30 ml Tall Tube | INFB53-L100-2 | 200 | Massage Bar – 40g Soap Box | INFB14-BMB200 | 200 |
| Body Wash – 1 oz/30 ml Tall Tube | INFB54-W100-2 | 200 | Cleansing Bar – 50g Soap Box | INFB15-BCB50 | 200 |

TERRA PURE®
EARTH CONSCIOUS
Green Tea

Terra Pure® Green Tea Collection

Enriched with pure ingredients and packaged using recycled paper and 100% soy based ink, the Terra Pure® Green Tea line is one of the most earth conscious amenity programs available today. Each formulation in the line is infused with aloe vera and olive oil and are 100% paraben and gluten free. The high-end formulations and beautiful design bring elegance to any upscale property while the environmentally friendly features of the Terra Pure® Green Tea collection add to the appeal.



| ITEM | SKU # | CASE | ITEM | SKU # | CASE | ITEM | SKU # | CASE |
|------------------------------------|-------------|------|----------------------------------|------------|------|-------------------------------------|------------------|------|
| Shampoo – 1.2 oz/36 ml Jam Jar | TPGT-S120-M | 300 | Lotion – 1 oz/30 ml Jam Jar | TP03-L100 | 300 | Shower Cap – Box | TPB-SC | 500 |
| Conditioner – 1.2 oz/36 ml Jam Jar | TPGT-C120-M | 300 | Body Wash – 1 oz/30 ml Jam Jar | TP04-W100 | 300 | Personal Care – Box | TPB-PC | 500 |
| Lotion – 1.2 oz/36 ml Jam Jar | TPGT-L120-M | 300 | Body Bar – 35g Tissue Pleat | TPPW-BB125 | 350 | Gallon: Shampoo – 128 oz/3.78 L | GAL01-DBG-S128-2 | 4 |
| Body Wash – 1.2 oz/36 ml Jam Jar | TPGT-W120-M | 300 | Cleansing Bar – 17g Tissue Pleat | TPPW-CB075 | 400 | Gallon: Conditioner – 128 oz/3.78 L | GAL02-DBG-C128-2 | 4 |
| Shampoo – 1 oz/30 ml Jam Jar | TP01-S100 | 300 | Body Bar – 42g Box | TPB-BB150 | 250 | Gallon: Lotion – 128 oz/3.78 L | GAL03-DBG-L128-2 | 4 |
| Conditioner – 1 oz/30 ml Jam Jar | TP02-C100 | 300 | Cleansing Bar – 28g Box | TPB-CB100 | 250 | Gallon: Body Wash – 128 oz/3.78 L | GAL04-DBG-W128-2 | 4 |



H2O Therapy® Collection

The earth conscious H2O Therapy® collection is created with natural ingredients and a light botanical fragrance. Our salon-quality formulations are made with olive oil and pure aloe vera. From ocean front properties to mountain retreats to luxury resorts across the country, the H2O Therapy® line of amenities brings a tasteful and welcoming atmosphere to each room.



| ITEM | SKU # | CASE | ITEM | SKU # | CASE | ITEM | SKU # | CASE |
|-------------------------------|------------|------|--|-------------|------|-------------------------------------|-------------|------|
| Shampoo – 1 oz/30 ml Tube | H2O01-S100 | 300 | Conditioning Shampoo – .85 oz/25 ml Tube | H2O10-CS085 | 300 | Lotion – .30 oz/10 ml Sachet Packet | H2O32-L025 | 500 |
| Conditioner – 1 oz/30 ml Tube | H2O02-C100 | 300 | Conditioner – .85 oz/25 ml Tube | H2O07-C085 | 300 | Massage Bar – 30g Sachet | H2O20-MB150 | 400 |
| Lotion – 1 oz/30 ml Tube | H2O03-L100 | 300 | Lotion – .85 oz/25 ml Tube | H2O08-L085 | 300 | Cleansing Bar – 14g Sachet | H2O21-CB075 | 1000 |
| Body Wash – 1 oz/30 ml Tube | H2O04-W100 | 300 | Body Wash – .85 oz/25 ml Tube | H2O09-W085 | 300 | Cleansing Bar – 28g Sachet | H2O22-CB100 | 500 |
| Shampoo – .85 oz/25 ml Tube | H2O06-S085 | 300 | Shampoo – .30 oz/10 ml Sachet Packet | H2O31-S025 | 500 | Massage Bar – 42g Sachet | H2O23-MB200 | 200 |

Terra Pure[®]
EARTH CONSCIOUS

*Wild
Citrus*

Terra Pure[®] Wild Citrus Collection

Warm tones and a clean design give Terra Pure[®] Wild Citrus an exceptional appeal. The fresh orange and warm ginger fragrance is a true favorite, while the rich salon-quality formulations are much appreciated by guests. This earth conscious line is enriched with olive oil and fresh aloe extract. The packaging is printed with 100% soy based ink. The Terra Pure[®] Wild Citrus collection is a perfect combination of quality, upscale design and environmental appeal.



| ITEM | SKU # | CASE | ITEM | SKU # | CASE | ITEM | SKU # | CASE |
|---------------------------------|---------------|------|----------------------------|-------------|------|----------------------------|----------|------|
| Shampoo – 1 oz/30 ml Bottle | WC06-S100OR-2 | 250 | Cleansing Bar – 28g Sachet | WC20-SCB150 | 300 | Shower Cap – Sachet | WC30-SSC | 500 |
| Conditioner – 1 oz/30 ml Bottle | WC07-C100OR-2 | 250 | Cleansing Bar – 14g Sachet | WC21-SCB075 | 400 | Personal Care Kit – Sachet | WC31-SPC | 500 |
| Lotion – 1 oz/30 ml Bottle | WC08-L100OR-2 | 250 | Body Bar – 42g Box | WC22-BBB150 | 250 | Shower Cap – Box | WC32-BSC | 500 |
| Body Wash – 1 oz/30 ml Bottle | WC09-W100OR-2 | 250 | Cleansing Bar – 28g Box | WC23-BCB100 | 250 | | | |



Terra Botanics® Collection

The beautiful Terra Botanics® collection, enriched with natural aloe vera and olive oil, features an upscale design and a fresh, up to date look. The salon-quality formulations are paraben & gluten free and have a delightful fresh lemongrass fragrance. Our pure oatmeal bars are the perfect compliment to the collection. The Terra Botanics® line of amenities is an elegant addition to the guest room.



| ITEM | SKU # | CASE | ITEM | SKU # | CASE |
|-------------------------------|--------------|------|--|------------------|------|
| Shampoo – 1 oz/30 ml Tube | TB01-S100 | 300 | Massage Bar – 28g Sachet | TB30-MB150 | 400 |
| Conditioner – 1 oz/30 ml Tube | TB02-C100 | 300 | Cleansing Bar – 14g Sachet | TB31-CB075 | 1000 |
| Lotion – 1 oz/30 ml Tube | TB03-L100 | 300 | Gallon: Shampoo – 128 oz/3.78 L | GAL01-DBG-S128-2 | 4 |
| Body Wash – 1 oz/30 ml Tube | TB04-W100 | 300 | Gallon: Conditioner – 128 oz/3.78 L | GAL02-DBG-C128-2 | 4 |
| Body Bar – 30g Pleat | TB20-BB100-C | 350 | Gallon: Lotion – 128 oz/3.78 L | GAL03-DBG-L128-2 | 4 |
| Cleansing Bar – 14g Pleat | TB21-CB050-C | 700 | Gallon: Hand & Body Wash – 128 oz/3.78 L | GAL04-DBG-W128-2 | 4 |

Desert Breeze®

Desert Breeze® Collection

The earth conscious Desert Breeze® collection is designed with a clean look and has a light botanical fragrance. Our salon-quality formulations are enriched with olive oil and natural aloe vera. The fresh citrus body bars and cleansing bars are made with nourishing olive oil and soothing aloe vera. The Desert Breeze® line of amenities brings a tasteful and welcoming atmosphere to each room.



| ITEM | SKU # | CASE | ITEM | SKU # | CASE |
|-------------------------------|------------|------|--|------------------|------|
| Shampoo – 1 oz/30 ml Tube | DB21-SGF | 300 | Cleansing Bar – 14g Sachet | DBFS-CB075 | 400 |
| Conditioner – 1 oz/30 ml Tube | DB22-CGF | 300 | Gallon: Shampoo – 128 oz/3.78 L | GAL01-DBG-S128-2 | 4 |
| Lotion – 1 oz/30 ml Tube | DB23-LGF | 300 | Gallon: Conditioner – 128 oz/3.78 L | GAL02-DBG-C128-2 | 4 |
| Body Wash – 1 oz/30 ml Tube | DB24-WGF | 300 | Gallon: Lotion – 128 oz/3.78 L | GAL03-DBG-L128-2 | 4 |
| Body Bar – 25g Sachet | DBFS-BB150 | 300 | Gallon: Hand & Body Wash – 128 oz/3.78 L | GAL04-DBG-W128-2 | 4 |

Eco Botanics® Collection

The beautiful Eco Botanics® line of amenities, enriched with honey and olive oil, brings a fresh feel to each guest room. This collection features salon-quality formulations that are gentle on the skin and hair. The moisturizing body bars and cleansing bars are vegetable based and have a refreshing chamomile and honey fragrance. All liquids and soaps are paraben free and gluten free. Eco Botanics®, a part of the EcoWell Health and Wellbeing group, is a perfect earth-conscious choice.



| ITEM | SKU # | CASE | ITEM | SKU # | CASE | ITEM | SKU # | CASE |
|--|-------------|------|---------------------------------|------------|------|--|------------|------|
| Shampoo – 1 oz/30 ml Tube | EB01-S100 | 300 | Shampoo – .85 oz/25 ml Tube | EB05-S085 | 300 | Cleansing Bar – 14g Sachet | EB21-CB075 | 1000 |
| Conditioner – 1 oz/30 ml Tube | EB02-C100 | 300 | Conditioner – .85 oz/25 ml Tube | EB06-C085 | 300 | Gallon: Shampoo – 128 oz/3.78 L | GAL10-EBSH | 4 |
| Lotion – 1 oz/30 ml Tube | EB03-L100 | 300 | Lotion – .85 oz/25 ml Tube | EB07-L085 | 300 | Gallon: Conditioner – 128 oz/3.78 L | GAL11-EBCO | 4 |
| Body Wash – 1 oz/30 ml Tube | EB04-W100 | 300 | Body Wash – .85 oz/25 ml Tube | EB08-W085 | 300 | Gallon: Lotion – 128 oz/3.78 L | GAL12-EBLO | 4 |
| Conditioning Shampoo – .85 oz/25 ml Tube | EB09-SCB085 | 300 | Body Bar – 25g Sachet | EB20-BB150 | 500 | Gallon: Hand & Body Wash – 128 oz/3.78 L | GAL13-EBWA | 4 |



Aqua Organics® Collection

The beautiful Aqua Organics® line has widespread appeal at resorts in diverse locations. High quality formulations, each enriched with fresh aloe and olive oil, are free of artificial colorings and have a refreshing lemongrass & honey fragrance. The lightly scented liquids and soaps are all paraben and gluten free, and gentle on the skin. The Aqua Organics® line of amenities is a wonderful earth-conscious choice.



| ITEM | SKU # | CASE |
|-------------------------------|------------|------|
| Shampoo – 1 oz/30 ml Tube | AQ01-S100 | 300 |
| Conditioner – 1 oz/30 ml Tube | AQ02-C100 | 300 |
| Lotion – 1 oz/30 ml Tube | AQ03-L100 | 300 |
| Body Wash – 1 oz/30 ml Tube | AQ04-W100 | 300 |
| Body Bar – 25g Sachet | AQ20-BB150 | 500 |
| Cleansing Bar – 14g Sachet | AQ21-CB075 | 1000 |

Mountain Breeze Collection

The environmentally friendly Mountain Breeze collection is made with fresh aloe vera. Our salon-quality formulations gently soothe the skin and nourish the hair. The refreshing pure citrus soaps as well as the oatmeal bars beautifully enhance this collection. Mountain Breeze's clean design and upscale look bring a wonderful feel of luxury to any guest room.



| ITEM | SKU # | CASE | ITEM | SKU # | CASE |
|-----------------------------------|------------|------|---|------------------|------|
| * Cond. Shampoo – 1 oz/30 ml Tube | MB01-S101 | 300 | Oatmeal Cleansing Bar – 35g Sachet | GS10-OB150 | 300 |
| * Conditioner – 1 oz/30 ml Tube | MB02-C101 | 300 | Oatmeal Massage Bar – 50g Sachet | GS11-MB175 | 225 |
| * Lotion – 1 oz/30 ml Tube | MB03-L101 | 300 | Gallon: Shampoo – 128 oz/3.78L | GAL01-DBG-S128-2 | 4 |
| * Body Wash – 1 oz/30 ml Tube | MB04-W101 | 300 | Gallon: Conditioner – 128 oz/3.78L | GAL02-DBG-C128-2 | 4 |
| Body Bar – 25g Sachet | GS14-BB150 | 500 | Gallon: Lotion – 128 oz/3.78L | GAL03-DBG-L128-2 | 4 |
| Cleansing Bar – 14g Sachet | GS15-CB075 | 1000 | Gallon: Hand & Body Wash – 128 oz/3.78L | GAL04-DBG-W128-2 | 4 |

*Mountain Breeze liquids are available in stock in LA warehouse only

Island Spa

Island Spa Collection

Created with pure ingredients and an upscale designer look, the Island Spa line of amenities brings a warm elegance to the guest room. The salon-quality liquids in the line are infused with olive oil and pure aloe vera and are lightly scented with mild tropical fragrances. Our body and cleansing bars are made with natural olive oil and soothing aloe. All Diversified Hospitality products are paraben and gluten free. Guests enjoy the pure products and appreciate the environmentally friendly choice.



| ITEM | SKU # | CASE | ITEM | SKU # | CASE | ITEM | SKU # | CASE |
|---------------------------------|-----------|------|-------------------------------|-----------|------|--|------------|------|
| Shampoo – 1.7 oz/50 ml Tube | IS01-S200 | 200 | Shampoo – 1 oz/30 ml Tube | IS06-S100 | 300 | Oatmeal Cleansing Bar – 35g Sachet | GS10-OB150 | 300 |
| Conditioner – 1.7 oz/50 ml Tube | IS02-C200 | 200 | Conditioner – 1 oz/30 ml Tube | IS07-C100 | 300 | Oatmeal Massage Bar – 50g Sachet | GS11-MB175 | 225 |
| Lotion – 1.7 oz/50 ml Tube | IS03-L200 | 200 | Lotion – 1 oz/30 ml Tube | IS08-L100 | 300 | Pure Citrus Body Bar – 25g Sachet | GS14-BB150 | 500 |
| Body Wash – 1.7 oz/50 ml Tube | IS04-W200 | 200 | Body Wash – 1 oz/30 ml Tube | IS09-W100 | 300 | Pure Citrus Cleansing Bar – 14g Sachet | GS15-CB075 | 1000 |

TERRA[®] therapy

Terra Therapy[®] Collection

The earth conscious Terra Therapy[®] collection is designed with a clean look and has a light green tea & lemongrass fragrance. Our salon-quality formulations are enriched with olive oil and natural aloe vera. The fresh aloe vera body bars and cleansing bars are made with olive oil and soothing aloe vera. The Terra Therapy[®] line of amenities brings a tasteful and welcoming atmosphere to each room.



| ITEM | SKU # | CASE | ITEM | SKU # | CASE |
|-------------------------------|-----------|------|------------------------------|-------------|------|
| Shampoo – 1 oz/30 ml Tube | TT01-S100 | 300 | Cleansing Bar – 28g Sachet | TT20-FB150 | 500 |
| Conditioner – 1 oz/30 ml Tube | TT02-C100 | 300 | Cleansing Bar – 28g Box | TT31-BCB100 | 250 |
| Lotion – 1 oz/30 ml Tube | TT03-L100 | 300 | Body Bar – 42g Box | TT32-BBB200 | 150 |
| Body Wash – 1 oz/30 ml Tube | TT04-W100 | 300 | Shower Cap – Box | TT40-SC | 300 |
| | | | Grooming & Mending Kit – Box | TT41-PC | 300 |

Terra Therapy line is stocked in LA only. Available by Special Order for states in the Central and Eastern time zones.



EcoBox Amenity Kits

Our amenity kit is designed to make your guests feel comfortable and pampered. The box is convenient to place in any room, saving you housekeeping time and hassle. The kit contains high quality products that are eco-friendly and recyclable, showing your commitment to sustainability. Order our amenity kit today and impress your guests with your hospitality!



| ITEM | SKU # | CASE |
|------|-------|------|
|------|-------|------|

- | | | |
|---|--------------------|----|
| Infusé® City Lavender Mint Amenity Kit Includes: • Shampoo 1 oz / 30 ml • Lotion 1 oz / 30 ml • Boxed Cleansing Bar 20g | AK03-INCLM-KIT-C20 | 20 |
|---|--------------------|----|

| ITEM | SKU # | CASE |
|------|-------|------|
|------|-------|------|

- | | | |
|---|--------------------|----|
| Infusé® White Tea Coconut Amenity Kit Includes: • Shampoo 1 oz / 30 ml • Lotion 1 oz / 30 ml • Cleansing Bar Sachet 20g • Make-up Remover Wipe | AK01-INWTC-KIT-C20 | 20 |
|---|--------------------|----|



EcoBox®

Terra Breeze® Detergent EcoBox Amenity Kits

Our Detergent Amenity kit is designed to make your guests feel at home. The box is convenient to place in any room, saving you housekeeping time and hassle. The kit contains high quality detergents for dishes and laundry packaged elegantly to impress your guests with your hospitality!



| ITEM | SKU # | CASE |
|---|------------------|------|
| Terra Breeze® Detergent Kit | AK02-DET-KIT-C20 | 20 |
| Includes: | | |
| • Terra Breeze® Liquid Dish Detergent 3.5 oz/103.5 ml | | |
| • Terra Breeze® Detergent Powder 1.5 oz/42.5g Packet | | |
| • Terra Breeze® Auto Dish Detergent Powder 1.5 oz/42.5g | | |
| • Kitchen Sponge | | |

Hospitality Slippers

Pamper your guests from head to toe with our newest comfort collection item. Our velvety slippers are made from soft poly terry and designed with non-skid EVA soles for safety. Available in breathable open-toe or cozy closed-toe options, these slippers will deliver a sense of extravagance for an affordable price.



| ITEM | SKU # | CASE |
|--|-----------|---------|
| White, Open Toe Slippers, Unisex, Size Large, Individually Wrapped | SLIP01-OT | 100 prs |
| White, Closed Toe Slippers, Unisex, Size Large, Individually Wrapped | SLIP02-CT | 100 prs |

ecoBar

COLLECTION

EcoBar Collection

Our EcoBar Collection combines style and sustainability. The earth conscious packaging is 100% plastic free, made with recycled content and printed with soy-based ink. Enriched with olive oil, the innovative shampoo bar can be lathered directly into hair to cleanse and nourish. With a refreshing White Tea and Coconut scent, this sleek collection is sure to satisfy ecofriendly guests.



| ITEM | SKU # | CASE |
|---|--------------|------|
| Conditioning Shampoo Bar- 1 oz / 28 g Box | EBH01-CSB100 | 200 |
| Cleansing Bar – 1 oz / 28 g Box | EBH02-CB100 | 200 |

Neutral Soap Collection

We offer a selection of luxurious gluten and paraben free bar soaps enriched with aloe vera and pure olive oil that beautifully complement our amenity collections.



| ITEM | SKU # | CASE | ITEM | SKU # | CASE |
|---|---------------|------|------------------------------------|-------------|------|
| Pure Citrus Body Bar – 25g Sachet | DBFS-BB150 | 300 | Oatmeal Cleansing Bar – 35g Sachet | GS10-OB150 | 300 |
| Pure Citrus Cleansing Bar – 14g Sachet | DBFS-CB075 | 400 | Oatmeal Massage Bar – 50g Sachet | GS11-MB175 | 225 |
| Pure Citrus Body Bar – 25g Sachet | GS14-BB150 | 500 | Coconut Cleansing Bar – 20g Sachet | IN20-SCB100 | 400 |
| Pure Citrus Cleansing Bar – 14g Sachet | GS15-CB075 | 1000 | Coconut Cleansing Bar – 40g Sachet | IN22-SCB200 | 200 |
| Fresh Aloe Cleansing Bar – 35g Tissue Pleat | GS12-PLEAT125 | 288 | Coconut Massage Bar – 50g Sachet | IN24-SMB50 | 200 |



Guest Accessories

Our current range of accessories beautifully complement each of our collections. Customization and co-branding is available on accessories.

| ITEM | SKU # | CASE | ITEM | SKU # | CASE |
|--|------------|------|---|----------------|------|
| Dental Care – Frosted Sachet {Toothbrush and .15 oz/5g Toothpaste} | G01-FSDC | 500 | Mouth Rinse – 1 oz/30 ml Bottle {Clearmint Flavor with Safety Seal} | G08-MW-144 | 144 |
| Personal Care – Frosted Sachet {2 Cotton Pads, 2 Cotton Swabs, Nail File, and Sewing Kit with 2 Needles, 6 Color Thread, a Safety Pin & 2 Buttons} | G02-FSPC | 500 | Make-Up Remover – Luxury Size {1 Wipe} | G09-MURE-2 | 500 |
| Bath Salts – 1.2 oz/34g Jar | G03-JJBS | 300 | Make-Up Remover – Standard Size {1 Wipe} | G09-MURE-STA | 500 |
| Shoe Mitt – Frosted Sachet {1 Cotton Mitt} | G04-FSSM | 500 | Cotton Swabs – Set of 2 Swabs in Cellophane Sleeve | G10-SWAB2-500 | 500 |
| Shower Cap – Frosted Sachet {1 Cap} | G05-FSSC | 500 | Mending Kit Plastic – Sewing Set in Frosted Sachet | G11-MEND | 500 |
| Shave Set – Frosted Sachet {Twin Blade Razor with Shield & .4 oz/12 ml Tube Shave Cream} | G06-FSSS | 500 | Toothbrush – Individually Cellophane Wrapped | G12-TOOTH | 144 |
| Hair Comb – Frosted Sachet | G07-COMB-2 | 500 | Razor – Twin Blade, Individually Cellophane Wrapped | G13-RAZOR | 144 |
| | | | Cotton Pads – Set of 2 Pads in Cellophane Wrap | G14-COTTON-500 | 500 |
| | | | Amenity Tray – Oval Frosted, 4.25" x 8" | TRY-AM-OVL | 50 |
| | | | Dark Wood Suit Hanger with Pants Bar (40 pcs/cs 4 inner cases) | HANGER6-DKWD-M | 40 |
| | | | Dark Wood Suit Hanger with Skirt Clips (40 pcs/cs 4 inner cases) | HANGER7-DKWD-W | 40 |

Gallon Size

Diversified stocks one gallon bottles of our Eco Botanics®, Infusé®, Desert Breeze®, Terra Pure® Green Tea & Wild Citrus collections. Our gallons contain the same salon-quality formulations as our hospitality size lines and are 100% paraben and gluten free.

| ECO BOTANICS® | SKU # | CASE | TERRA PURE® WILD CITRUS | SKU # | CASE |
|--|----------------------|------|----------------------------------|-----------------|------|
| Shampoo – 128 oz/3.78 L | GAL10-EBSH-U | 4 | Shampoo – 128 oz/3.78 L | GAL60-TPWC-S128 | 4 |
| Conditioner – 128 oz/3.78 L | GAL11-EBCO | 4 | Conditioner – 128 oz/3.78 L | GAL61-TPWC-C128 | 4 |
| Lotion – 128 oz/3.78 L | GAL12-EBLO | 4 | Lotion – 128 oz/3.78 L | GAL62-TPWC-L128 | 4 |
| Hand & Body Wash – 128 oz/3.78 L | GAL13-EBWA-U | 4 | Hand & Body Wash – 128 oz/3.78 L | GAL63-TPWC-W128 | 4 |
| TERRA PURE® GREEN TEA | SKU # | CASE | INFUSÉ® | SKU # | CASE |
| Shampoo – 128 oz/3.78 L | GAL01-DBG-S128 | 4 | Shampoo – 128 oz/3.78 L | GAL80-H2OTROP-S | 4 |
| Conditioner – 128 oz/3.78 L | GAL02-DBG-C128 | 4 | Conditioner – 128 oz/3.78 L | GAL81-H2OTROP-C | 4 |
| Lotion – 128 oz/3.78 L | GAL03-DBG-L128 | 4 | Hand & Body Wash – 128 oz/3.78 L | GAL82-H2OTROP-W | 4 |
| Hand & Body Wash – 128 oz/3.78 L | GAL04-DBG-W128 | 4 | Lotion – 128 oz/3.78 L | GAL83-H2OTROP-L | 4 |
| TERRA PURE® CLEAR FRAGRANCE AND COLORANT FREE | SKU # | CASE | INFUSÉ® LAVENDER MINT | SKU # | CASE |
| Shampoo – 128 oz/3.78 L | GAL40-TPF-S128-CLEAR | 4 | Shampoo – 128 oz/3.78 L | GAL85-LAVM-S128 | 4 |
| Conditioner – 128 oz/3.78 L | GAL41-TPF-C128-CLEAR | 4 | Conditioner – 128 oz/3.78 L | GAL86-LAVM-C128 | 4 |
| Lotion – 128 oz/3.78 L | GAL42-TPF-L128-CLEAR | 4 | Lotion – 128 oz/3.78 L | GAL87-LAVM-L128 | 4 |
| Hand & Body Wash – 128 oz/3.78 L | GAL43-TPF-W128-CLEAR | 4 | Hand & Body Wash – 128 oz/3.78 L | GAL88-LAVM-W128 | 4 |
| | | | DISPENSER PUMP | SKU # | EACH |
| | | | Dispenser Pump – .25 oz Output | GAL32-DP-STA | 1 |





Laundry & Dishwashing Detergents

| ITEM | SKU # | CASE |
|--|---------------|------|
| Terra Breeze® Auto Dish Detergent Powder 1.5 oz/42.5g Packet | TE02-DISH150 | 200 |
| Terra Breeze® Dishwasher Detergent Tablet | TE07-DISHTAB | 200 |
| Terra Breeze® Gel Laundry Pod; In Individual Pouch 15g | TE08-LAUPOD | 150 |
| Terra Breeze® for High Efficiency & Regular Laundry Detergent Powder 1.5 oz/42.5g Packet | TE03-LAU150 | 150 |
| Terra Breeze® Liquid Dish Detergent 1.6 oz/47 ml Bottle | TE04-DLIQ160 | 144 |
| Terra Breeze® Liquid Dish Detergent 3.5 oz/103.5 ml Bottle | TE01-LIQ350 | 72 |
| Terra Breeze® Liquid Dish Detergent 1 Gallon/3.78 L Bottle | TE20-2GALDISH | 4 |
| Individually Wrapped Blue Wave Kitchen Sponge | TE30-SPONGE | 100 |
| Terra Breeze® Liquid Dish Detergent Gallon Pump | GAL32-DP-STA | 1 |



Custom Amenities

We excel in creating customized amenity collections, packaged in distinct bottles, boxes, and wrappers. From the brand name to the end formulation, we individually customize your perfect program. Using your feedback, we ensure the design beautifully accents your property.

At every stage, we offer numerous alternatives and options. Providing contemporary and traditional choices, we meet and exceed your needs with customized formulations, fragrances and colors as well as environmentally friendly selections.

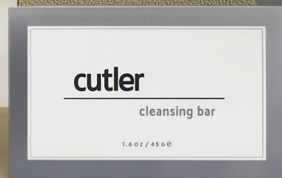
Additionally, our Co-Logo Branding Program allows you to take advantage of our strong brands while featuring your own logo. In doing so, your name is featured within our beautiful collections.

Low minimum order quantity of 15,000 per SKU

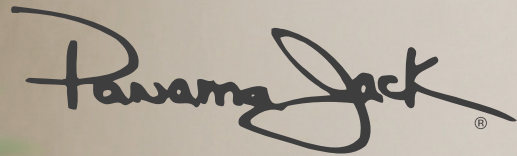


cutler

LUXURY AMENITIES



| ITEM | SKU # | CASE | ITEM | SKU # | CASE |
|---|--------------|------|---|----------------|------|
| Shampoo - Sweetgrass 1 oz / 30 ml tube | CUT01-S100 | 300 | EcoLux® Air Bracket Adhesive Mount System | AIR01-BR | 24 |
| Conditioner - Sweetgrass 1 oz / 30 ml tube | CUT02-C100 | 300 | Shampoo - Sweetgrass 16.23 oz / 480 ml Filled Pump Dispenser Bottle | AIR30-CUT-S480 | 12 |
| Lotion - Sweetgrass 1 oz / 30 ml tube | CUT03-L100 | 300 | Conditioner - Sweetgrass 16.23 oz / 480 ml Filled Pump Dispenser Bottle | AIR31-CUT-C480 | 12 |
| Body Wash - Sweetgrass 1 oz / 30 ml tube | CUT04-W100 | 300 | Body Wash - Sweetgrass 16.23 oz / 480 ml Filled Pump Dispenser Bottle | AIR32-CUT-W480 | 12 |
| Cleansing Bar - Sweetgrass Boxed Soap 1 oz / 28 g | CUT24-BCB100 | 250 | Lotion - Sweetgrass 16.23 oz / 480 ml Filled Pump Dispenser Bottle | AIR33-CUT-L480 | 12 |
| Cleansing Bar - Sweetgrass Boxed Soap 1.6 oz / 45 g | CUT30-BCB200 | 200 | Hand Wash - Sweetgrass 16.23 oz / 480 ml Filled Pump Dispenser Bottle | AIR34-CUT-H480 | 12 |

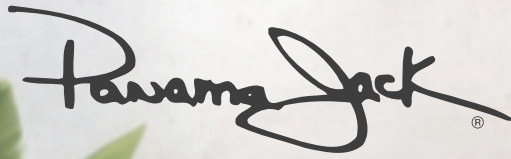


Panama Jack® Wisteria Line

The beautiful Panama Jack Wisteria line of guest amenities is a showstopper with warm neutral colors and champagne gold print. The delightful wisteria scent has middle notes of orange peel and sweetgrass and under notes of warm vanilla for a fresh and balanced fragrance.



| ITEM | SKU # | CASE | ITEM | SKU # | CASE |
|--|----------------|------|---|-------------|------|
| Shampoo - Wisteria Flip Cap 1 oz Fill in 1.1 oz tube / 31 oz | PJW01-S100 | 200 | EcoLux® Air Bracket Adhesive Mount System | AIR01-BR | 24 |
| Conditioner - Wisteria Flip Cap 1 oz Fill in 1.1 oz tube / 31 oz | PJW02-C100 | 200 | Shampoo - Wisteria 16.23 oz / 480 ml Filled Pump Dispenser Bottle | PJW40-AIR-S | 12 |
| Lotion - Wisteria Flip Cap 1 oz Fill in 1.1 oz tube / 31 oz | PJW03-L100 | 200 | Conditioner - Wisteria 16.23 oz / 480 ml Filled Pump Dispenser Bottle | PJW41-AIR-C | 12 |
| Body Wash - Wisteria Flip Cap 1 oz Fill in 1.1 oz tube / 31 oz | PJW04-W100 | 200 | Body Wash - Wisteria 16.23 oz / 480 ml Filled Pump Dispenser Bottle | PJW42-AIR-W | 12 |
| Cleansing Bar - Wisteria Boxed Soap 1 oz / 28 g | PJW20-BCB100 | 200 | Lotion - Wisteria 16.23 oz / 480 ml Filled Pump Dispenser Bottle | PJW43-AIR-L | 12 |
| Cleansing Bar - Wisteria Boxed Soap 1.4 oz / 40 g | PJW22-BCB200 | 200 | Hand Wash - Wisteria 16.23 oz / 480 ml Filled Pump Dispenser Bottle | PJW44-AIR-H | 12 |
| Body Bar - Wisteria Tissue Pleat 1.25 oz / 35 g | PJW24-PLEAT125 | 300 | | | |



Panama Jack® Vivid Creamsicle Line

Start the party with the stunning Panama Jack® Vivid Creamsicle collection. This wildly fun line has a bright orange fragrance with mid notes of vanilla and cream and a balancing grapefruit blossom bottom note, making it a favorite of all ages.



| ITEM | SKU # | CASE | ITEM | SKU # | CASE |
|---|----------------|------|--|---------------|------|
| Shampoo - Orange Creamsicle Tall Tube Flip Cap 1 oz / 30 ml | PJCRE01-S100 | 200 | EcoLux® Air Bracket Adhesive Mount System | AIR01-BR | 24 |
| Conditioner - Orange Creamsicle Tall Tube Flip Cap 1 oz / 30 ml | PJCRE02-C100 | 200 | Shampoo - Orange Creamsicle 16.23 oz / 480 ml Filled Pump Dispenser Bottle | PJCRE50-AIR-S | 12 |
| Lotion - Orange Creamsicle Tall Tube Flip Cap 1 oz / 30 ml | PJCRE03-L100 | 200 | Conditioner - Orange Creamsicle 16.23 oz / 480 ml Filled Pump Dispenser Bottle | PJCRE51-AIR-C | 12 |
| Body Wash - Orange Creamsicle Tall Tube Flip Cap 1 oz / 30 ml | PJCRE04-W100 | 200 | Body Wash - Orange Creamsicle 16.23 oz / 480 ml Filled Pump Dispenser Bottle | PJCRE52-AIR-W | 12 |
| Cleansing Bar - Orange Creamsicle Boxed Soap 1 oz / 28 g | PJCRE20-BCB100 | 200 | Lotion - Orange Creamsicle 16.23 oz / 480 ml Filled Pump Dispenser Bottle | PJCRE53-AIR-L | 12 |
| Cleansing Bar - Orange Creamsicle Boxed Soap 1.4 oz / 40 g | PJCRE22-BCB200 | 200 | Hand Wash - Orange Creamsicle 16.23 oz / 480 ml Filled Pump Dispenser Bottle | PJCRE54-AIR-H | 12 |



Panama Jack® Cucumber Melon Line

Panama Jack's® Cucumber Melon line is sure to please with nostalgic amber bottles and natural paper soap boxes. With clean cucumber and fresh melon top notes and orange and lemon peel undertones, this wonderful line joyfully reminds of the past and adds fun to happy new memories.



| ITEM | SKU # | CASE |
|--|---------------|------|
| Shampoo - Cucumber Melon Matte Amber Bottle 1 oz / 30 ml | PJCM01-S100 | 200 |
| Conditioner - Cucumber Melon Amber Bottle 1 oz / 30 ml | PJCM02-C100 | 200 |
| Lotion - Cucumber Melon Matte Amber Bottle 1 oz / 30 ml | PJCM03-L100 | 200 |
| Body Wash - Cucumber Melon Matte Amber Bottle 1 oz / 30 ml | PJCM04-W100 | 200 |
| Cleansing Bar - Cucumber Melon Boxed Soap 1 oz / 28 g | PJCM20-BCB100 | 200 |
| Cleansing Bar - Cucumber Melon Boxed Soap 1.4 oz / 40 g | PJCM22-BCB200 | 200 |

MAKARI

Makari Le Bosquet Line

Makari's Le Bosquet for hospitality is a beautiful line with a rich inviting scent. Le Bosquet is inspired by mornings in the garden, with top notes of fresh sweet fig, soft vetiver enriched with warm orange peel and bottom notes of cedarwood. The salon-quality formula is 100% Paraben and Gluten free. Formulated with Pure Olive Oil and Aloe Vera to soothe the skin and nourish the hair. Enjoy this iconic line, coming soon to the finest hotels.



| ITEM | SKU # | CASE |
|---|-------------|------|
| Shampoo - 1 oz / 30 ml Tube | MAK01-S100 | 200 |
| Conditioner - 1 oz / 30 ml Tube | MAK02-C100 | 200 |
| Lotion - 1 oz / 30 ml Tube | MAK03-L100 | 200 |
| Body Wash - 1 oz / 30 ml Tube | MAK04-W100 | 200 |
| Cleansing Bar - Boxed Soap 1.1 oz / 30 g | MAK20-BCB30 | 200 |
| Cleansing Bar - Boxed Soap 1.75 oz / 50 g | MAK22-BCB50 | 200 |

MAKARI

Makari Le Bosquet Air Dispenser Collection

Makari Le Bosquet for hospitality is a beautiful line with a warm inviting scent. This collection is inspired by mornings in the garden, with top notes of green tea, soft vetiver enriched with warm orange peel and bottom notes of cedarwood. The salon-quality formula is 100% Paraben and Gluten free. The elegant formulations are enriched with pure olive oil and aloe vera extract to soothe the skin and nourish the hair. With the hidden locking mechanism of the EcoLux Air bracket system, the pump bottles are designed to fit in beautifully with any high-end guest bathroom design.



| ITEM | SKU # | CASE |
|--|-------------|------|
| EcoLux® Air Bracket Adhesive Mount System | AIR01-BR | 24 |
| Shampoo - 16.23 oz / 480 ml Filled Pump Dispenser Bottle | MAK50-AIR-S | 12 |
| Conditioner - 16.23 oz / 480 ml Filled Pump Dispenser Bottle | MAK51-AIR-C | 12 |
| Body Wash - 16.23 oz / 480 ml Filled Pump Dispenser Bottle | MAK52-AIR-W | 12 |
| Lotion - 16.23 oz / 480 ml Filled Pump Dispenser Bottle | MAK53-AIR-L | 12 |
| Hand Wash - 16.23 oz / 480 ml Filled Pump Dispenser Bottle | MAK54-AIR-H | 12 |

INFUSÉ[®] CITY

Lavender Mint EcoLux[®] Air Dispenser Collection



| ITEM | SKU # | CASE |
|---|-----------------|------|
| EcoLux [®] Air Bracket Adhesive Mount System | AIR01-BR | 24 |
| Infuse [®] City EcoLux [®] Air: Shampoo - 16.23 oz / 480 ml | AIR20-INFB-S480 | 12 |
| Infuse [®] City EcoLux [®] Air: Conditioner - 16.23 oz / 480 ml | AIR21-INFB-C480 | 12 |
| Infuse [®] City EcoLux [®] Air: Body Wash - 16.23 oz / 480 ml | AIR22-INFB-W480 | 12 |
| Infuse [®] City EcoLux [®] Air: Lotion - 16.23 oz / 480 ml | AIR23-INFB-L480 | 12 |
| Infuse [®] City EcoLux [®] Air: Hand Wash - 16.23 oz / 480 ml | AIR24-INFB-H480 | 12 |

| TERRA PURE GREEN TEA LEMONGRASS | SKU # | CASE |
|--|---------------|------|
| Terra Pure [®] EcoLux [®] Air: Shampoo - 16.23 oz / 480 ml | AIR10-TP-S480 | 12 |
| Terra Pure [®] EcoLux [®] Air: Conditioner - 16.23 oz / 480 ml | AIR11-TP-C480 | 12 |
| Terra Pure [®] EcoLux [®] Air: Body Wash - 16.23 oz / 480 ml | AIR12-TP-W480 | 12 |
| Terra Pure [®] EcoLux [®] Air: Lotion - 16.23 oz / 480 ml | AIR13-TP-L480 | 12 |
| Terra Pure [®] EcoLux [®] Air: Hand Wash - 16.23 oz / 480 ml | AIR14-TP-H480 | 12 |

EcoLux® Air Dispenser

Our newest dispenser has a seamless appearance with sleek lines and concealed brackets. The hidden locking mechanism inconspicuously provides theft and tamper resistance while keeping the focus on the elegant bottles and salon-quality products. Brackets are mounted using drill-free adhesive for quick, damage-free installation. When it is time to change the long lasting bottles, a quick press of the key releases the empty dispenser. Then simply slide down a fresh bottle to lock in place. The effortless process significantly reduces housekeeping time for overall cost savings.

EcoLux® AIR



| ITEM | SKU # | CASE |
|--|---------------|------|
| EcoLux® Air Bracket Adhesive Mount System | AIR01-BR | 24 |
| Terra Pure® EcoLux® Air: Shampoo - 16.23 oz / 480 ml | AIR10-TP-S480 | 12 |
| Terra Pure® EcoLux® Air: Conditioner - 16.23 oz / 480 ml | AIR11-TP-C480 | 12 |
| Terra Pure® EcoLux® Air: Body Wash - 16.23 oz / 480 ml | AIR12-TP-W480 | 12 |
| Terra Pure® EcoLux® Air: Lotion - 16.23 oz / 480 ml | AIR13-TP-L480 | 12 |
| Terra Pure® EcoLux® Air: Hand Wash - 16.23 oz / 480 ml | AIR14-TP-H480 | 12 |

Acqua VERA

Infusé® Spa Collection White Tea and Coconut Bottles for the Acquavera Dispenser

Our newest dispenser bottle line brings luxury to any bathroom whether in our Acquavera bracket system or directly on the countertop. The earth-conscious refillable bottles feature a clean and elegant design that enhances the appearance of any spa or suite. The individually labeled bottles are also available for retail sale and customization.

Also available in Lavender Mint.



| INFUSÉ® WHITE TEA AND COCONUT | SKU # | CASE |
|--|----------------|------|
| Shampoo – 13.53 oz/400 ml Pump Dispenser | ACQ10-WTC-S400 | 12 |
| Conditioner – 13.53 oz/400 ml Pump Dispenser | ACQ11-WTC-C400 | 12 |
| Body Wash – 13.53 oz/400 ml Pump Dispenser | ACQ12-WTC-W400 | 12 |
| Lotion – 13.53 oz/400 ml Pump Dispenser | ACQ13-WTC-L400 | 12 |
| Hand Wash – 13.53 oz/400 ml Pump Dispenser | ACQ14-WTC-H400 | 12 |

| ITEM | SKU # | EACH |
|--|---------------|------|
| Acquavera Triple Bracket - Brushed Silver Finish | AV01-T-SILVER | 1 |
| Acquavera Triple Bracket - Black | AV02-T-BLK | 1 |
| Acquavera Double Bracket - Brushed Silver Finish | AV21-D-SILVER | 1 |
| Acquavera Double Bracket - Black | AV22-D-BLK | 1 |

| INFUSÉ® LAVENDER MINT | SKU # | CASE |
|--|----------------|------|
| Shampoo – 13.53 oz/400 ml Pump Dispenser | ACQ15-ILM-S400 | 12 |
| Conditioner – 13.53 oz/400 ml Pump Dispenser | ACQ16-ILM-C400 | 12 |
| Body Wash – 13.53 oz/400 ml Pump Dispenser | ACQ17-ILM-W400 | 12 |
| Lotion – 13.53 oz/400 ml Pump Dispenser | ACQ18-ILM-L400 | 12 |
| Hand Wash – 13.53 oz/400 ml Pump Dispenser | ACQ19-ILM-H400 | 12 |



Acqua VERA

Acquavera Bracket System

Our newest dispenser program, the luxurious Acquavera system, features a sleek tamper-resistant bracket that pairs with our elegant pump dispenser amenity bottles. The robust ABS plastic holder is extremely durable and installation is easy with a secure mounting system that requires no drilling. Replacement or refill of the bottles is quick and easy using the convenient simple to use key. The eco-friendly dispenser bottles are made of the food grade PET material, one of the most recyclable plastics available today.

Beauty, ease of use and earth-conscious materials make the Acquavera dispenser system the ideal amenity system.

Also available in White Tea and Coconut.

| ITEM | SKU # | EACH |
|--|---------------|------|
| Acquavera Triple Bracket - Brushed Silver Finish | AV01-T-SILVER | 1 |
| Acquavera Triple Bracket - Black | AV02-T-BLK | 1 |
| Acquavera Double Bracket - Brushed Silver Finish | AV21-D-SILVER | 1 |
| Acquavera Double Bracket - Black | AV22-D-BLK | 1 |

| INFUSÉ [®] LAVENDER MINT | SKU # | CASE |
|--|----------------|------|
| Shampoo - 13.53 oz/400 ml Pump Dispenser | ACQ15-ILM-S400 | 12 |
| Conditioner - 13.53 oz/400 ml Pump Dispenser | ACQ16-ILM-C400 | 12 |
| Body Wash - 13.53 oz/400 ml Pump Dispenser | ACQ17-ILM-W400 | 12 |
| Lotion - 13.53 oz/400 ml Pump Dispenser | ACQ18-ILM-L400 | 12 |
| Hand Wash - 13.53 oz/400 ml Pump Dispenser | ACQ19-ILM-H400 | 12 |

| INFUSÉ [®] WHITE TEA AND COCONUT | SKU # | CASE |
|--|----------------|------|
| Shampoo - 13.53 oz/400 ml Pump Dispenser | ACQ10-WTC-S400 | 12 |
| Conditioner - 13.53 oz/400 ml Pump Dispenser | ACQ11-WTC-C400 | 12 |
| Body Wash - 13.53 oz/400 ml Pump Dispenser | ACQ12-WTC-W400 | 12 |
| Lotion - 13.53 oz/400 ml Pump Dispenser | ACQ13-WTC-L400 | 12 |
| Hand Wash - 13.53 oz/400 ml Pump Dispenser | ACQ14-WTC-H400 | 12 |

EcoWell® T R U E



EcoWell® TRUE Collection

Our newest dispenser, the elegant EcoWell® True system, has a tamper-resistant locking ABS plastic bracket and is accompanied by the beautiful Terra Pure® pump bottles. Installation is easy with a secure mounting system requiring no drilling. The EcoWell® True dispenser is easy to maintain with fill in place or quick bottle change. The environmentally safe refillable bottles are made with recyclable PET material. Guests will appreciate the high-end salon quality formulations and the eco-friendly packaging. Non-refillable bottle options are also available.



| ITEM | SKU # | EACH |
|----------------------------------|-------------|------|
| Dispenser Bracket - Single Black | EWT01-BLK-S | 1 |
| Dispenser Bracket - Double Black | EWT02-BLK-D | 1 |
| Dispenser Bracket - Triple Black | EWT03-BLK-T | 1 |
| Dispenser Bracket - Double White | EWT05-WHT-D | 1 |
| Dispenser Bracket - Triple White | EWT06-WHT-T | 1 |

| TERRA PURE ALOE VERA HAND SANITIZER | SKU # | CASE |
|--|------------|------|
| Hand Sanitizer - 10.14 oz/300 ml Pump Dispenser (NDC 77849-002-02) | HS02-300ML | 12 |

| TERRA PURE GREEN TEA LEMONGRASS | SKU # | CASE |
|--|-------------------|------|
| Shampoo - 10.14 oz/300 ml Pump Dispenser | PMP21-GTLG-S300 | 12 |
| Conditioner - 10.14 oz/300 ml Pump Dispenser | PMP22-GTLG-C300 | 12 |
| Body Wash - 10.14 oz/300 ml Pump Dispenser | PMP23-GTLG-W300 | 12 |
| Lotion - 10.14 oz/300 ml Pump Dispenser | PMP24-GTLG-L300 | 12 |
| Hand Wash - 10.14 oz/300 ml Pump Dispenser | PMP25-GTLG-H300 | 12 |
| Antibacterial Hand Soap - 10.14 oz/300 ml Pump Dispenser | PMP26-GTLG-ABH300 | 12 |

INFUSÉ® *Spa Collection*

Infusé® Spa Collection Lavender Mint Bottles for the EcoWell True Dispenser

Our newest dispenser bottle line brings luxury to any bathroom whether in our EcoWell® True bracket system or directly on the countertop. The earth-conscious refillable bottles feature a clean and elegant design that enhances the appearance of any spa or suite. The individually labeled bottles are also available for retail sale and customization.



| INFUSÉ® SPA COLLECTION LAVENDER MINT | SKU # | CASE |
|--|-----------------|------|
| Shampoo – 10.14 oz/300 ml Pump Dispenser | PMP01-INLM-S300 | 12 |
| Conditioner – 10.14 oz/300 ml Pump Dispenser | PMP02-INLM-C300 | 12 |
| Lotion – 10.14 oz/300 ml Pump Dispenser | PMP03-INLM-W300 | 12 |
| Body Wash – 10.14 oz/300 ml Pump Dispenser | PMP04-INLM-L300 | 12 |
| Hand Wash – 10.14 oz/300 ml Pump Dispenser | PMP05-INLM-H300 | 12 |

| ITEM | SKU # | EACH |
|----------------------------------|-------------|------|
| Dispenser Bracket - Double Black | EWT02-BLK-D | 1 |
| Dispenser Bracket - Triple Black | EWT03-BLK-T | 1 |
| Dispenser Bracket - Double White | EWT05-WHT-D | 1 |
| Dispenser Bracket - Triple White | EWT06-WHT-T | 1 |



EcoLux® Alta Dispenser

The ultra-luxurious Terra Pure® Green Tea products are enriched with natural aloe vera, wild chamomile extract, vitamin E and revitalizing keratin. Our hygienic closed system with controlled dosage minimizes product waste while the quick change recyclable bottles reduce housekeeping time.



| ITEM | SKU # | CASE | ITEM | SKU # | CASE |
|---|---------------|------|--|------------|------|
| Terra Pure® EcoLux® Alta: Shampoo – 11.5 oz/340 ml | SM11-TPSH-340 | 24 | Coconut Massage Bar – 50g Sachet | IN24-SMB50 | 200 |
| Terra Pure® EcoLux® Alta: Conditioner – 11.5 oz/340 ml | SM12-TPCO-340 | 24 | Terra Pure® Lotion – 1.2 oz/36 ml Jam Jar | TPGT-L120 | 300 |
| Terra Pure® EcoLux® Alta: Body Wash – 11.5 oz/340 ml | SM13-TPWA-340 | 24 | Terra Pure® Lotion – 1 oz/30 ml Jam Jar | TP03-L100 | 300 |
| Bracket for Terra Pure® EcoLux® Alta Cartridge: 1 Key, 2 Plugs (6 mm), 2 Screw Covers, 2 Steel Crosswise Screws, 1 White Valve Cover and Instructions | HMS#BI | 30 | Terra Pure® Body Bar – 35g Tissue Pleat | TPPW-BB125 | 350 |
| Fresh Aloe Cleansing Bar – 35g Tissue Pleat | GS12-PLEAT125 | 288 | Terra Pure® Cleansing Bar – 17g Tissue Pleat | TPPW-CB075 | 400 |
| Coconut Cleansing Bar – 20g Small Sachet | IN20-SCB100 | 400 | Terra Pure® Body Bar – 42g Box | TPB-BB150 | 250 |
| Coconut Cleansing Bar – 40g Large Sachet | IN22-SCB200 | 200 | Terra Pure® Cleansing Bar – 28g/Box | TPB-CB100 | 250 |
| | | | Terra Pure® Shower Cap – Box | TPB-SC | 500 |
| | | | Terra Pure® Personal Care – Box | TPB-PC | 500 |



EcoLux® Alta 380 Dispenser

A modern, refined approach to dispenser bottles, the EcoLux® Alta system features our salon quality Desert Breeze®, Eco Botanics® and H2O Therapy® lines in tamper-resistant recyclable bottles.

The liquid inside the bottle is never touched or refilled, ensuring the most hygienic method of dispensing product. Discreet band on side of the bottle allows for quickly checking the remaining amount of product. Bottles are easily and quickly replaced, saving time and money.

Sleek, unobtrusive brackets are easy to install in both the minimalistic quick-drill version as well as in the drill-free adhesive version.



| ITEM | SKU # | CASE |
|---|----------------|------|
| Desert Breeze® EcoLux® Alta: Shampoo – 12.8 oz/380 ml | ALT30-DBSH-380 | 24 |
| Desert Breeze® EcoLux® Alta: Conditioner – 12.8 oz/380 ml | ALT31-DBCO-380 | 24 |
| Desert Breeze® EcoLux® Alta: Body Wash – 12.8 oz/380 ml | ALT32-DBWA-380 | 24 |
| Desert Breeze® EcoLux® Alta: Lotion – 12.8 oz/380 ml | ALT33-DBLO-380 | 24 |
| Desert Breeze® EcoLux® Alta: Hand Wash – 12.8 oz/380 ml | ALT34-DBHA-380 | 24 |
| Eco Botanics® EcoLux® Alta: Shampoo – 12.8 oz/380 ml | ALT40-EBSH-380 | 24 |
| Eco Botanics® EcoLux® Alta: Conditioner – 12.8 oz/380 ml | ALT41-EBCO-380 | 24 |
| Eco Botanics® EcoLux® Alta: Body Wash – 12.8 oz/380 ml | ALT42-EBWA-380 | 24 |
| Eco Botanics® EcoLux® Alta: Lotion – 12.8 oz/380 ml | ALT43-EBLO-380 | 24 |
| Eco Botanics® EcoLux® Alta: Hand Wash – 12.8 oz/380 ml | ALT44-EBHA-380 | 24 |

| ITEM | SKU # | CASE |
|---|-----------------|------|
| H ₂ O Therapy® EcoLux® Alta: Shampoo – 12.8 oz/380 ml | ALT20-H2OSH-380 | 24 |
| H ₂ O Therapy® EcoLux® Alta: Conditioner – 12.8 oz/380 ml | ALT21-H2OCO-380 | 24 |
| H ₂ O Therapy® EcoLux® Alta: Body Wash – 12.8 oz/380 ml | ALT22-H2OWA-380 | 24 |
| H ₂ O Therapy® EcoLux® Alta: Lotion – 12.8 oz/380 ml | ALT23-H2OLO-380 | 24 |
| H ₂ O Therapy® EcoLux® Alta: Hand Wash – 12.8 oz/380 ml | ALT24-H2OHA-380 | 24 |
| Bracket and Plate for Adhesive Mount System Includes Bracket, Adhesive, Double Sided Tape, Key, Valve Cover & Instructions | ALT01-BR-PLATE | 24 |
| Bracket for Standard Mount System Includes Screws, Screw Covers, Plugs, Key, Valve Cover & Instructions | ALT02-BR-SM | 24 |
| Alta Valve Cover Replacement | ALT03-VC | 48 |



EcoLux® Bracket System

The high-end EcoLux® stainless steel wall-mounted bracket system with our crystal clear PET pump dispensers are the perfect eco-friendly choice for upscale hotels & resorts to reduce waste while enjoying substantial cost savings.

The exquisitely designed brackets are theft resistant and easily accessible for your guests. The beautiful EcoLux® system utilizes our Terra Pure® Green Tea, Infusé® and Eco Botanics® 300 mL bottles and are easily refilled with our stock gallon lines.



| ITEM | SKU # | EACH |
|---|-------------|------|
| Single Dispenser - Wall Bracket Chrome Finish | ELB01-CSING | 1 |
| Double Dispenser - Wall Bracket Chrome Finish | ELB02-CDOUB | 1 |
| Triple Dispenser - Wall Bracket Chrome Finish | ELB03-CTRIP | 1 |



INFUSÉ

TERRA PURE®
EARTH CONSCIOUS
Green Tea

EcoLux® Bracket Bottles

Whether the pump dispensers are kept in our stainless steel holders or directly on a washstand, they bring elegance to any space with their timeless design and high-quality finish.

The earth conscious Eco Botanics®, Infusé® and Terra Pure® Green Tea collections are available in 300 ml pump dispensers to use in suites & spas, and are labeled for retail sale. Custom and co-branding are also available for retail size products.

| ECO BOTANICS® | SKU # | CASE |
|--|---------------|------|
| Shampoo – 10.14 oz/300 ml Pump Dispenser | EB91-S1014-24 | 24 |
| Conditioner – 10.14 oz/300 ml Pump Dispenser | EB92-C1014-24 | 24 |
| Lotion – 10.14 oz/300 ml Pump Dispenser | EB93-L1014-24 | 24 |
| Body Wash – 10.14 oz/300 ml Pump Dispenser | EB94-W1014-24 | 24 |

| INFUSÉ® | SKU # | CASE |
|--|---------------|------|
| Shampoo – 10.14 oz/300 ml Pump Dispenser | IN91-S1014-24 | 24 |
| Conditioner – 10.14 oz/300 ml Pump Dispenser | IN92-C1014-24 | 24 |
| Lotion – 10.14 oz/300 ml Pump Dispenser | IN93-L1014-24 | 24 |
| Body Wash – 10.14 oz/300 ml Pump Dispenser | IN94-W1014-24 | 24 |

| TERRA PURE GREEN TEA® | SKU # | CASE |
|--|---------------|------|
| Shampoo – 10.14 oz/300 ml Pump Dispenser | TP91-S1014-24 | 24 |
| Conditioner – 10.14 oz/300 ml Pump Dispenser | TP92-C1014-24 | 24 |
| Lotion – 10.14 oz/300 ml Pump Dispenser | TP93-L1014-24 | 24 |
| Body Wash – 10.14 oz/300 ml Pump Dispenser | TP94-W1014-24 | 24 |



EcoWell[®]

Health and Wellbeing Formulations

EcoWell is the designation given to our products that have a variety of the following eco friendly and health and wellness features:

All Personal Care Products

- Paraben and Gluten Free
- Enriched with aloe vera and olive oil
- Cruelty Free – never tested on animals

Select Item Features

- Printed with soy based ink
- Made with recyclable PET plastic
- Created with recyclable metal caps
- Paper label and soap boxes made with recycled content paper
- Free of added colors
- Enriched with honey, shea butter, sea minerals

Optional Features

- Sulfate Free
- Fragrance Free
- Essential Oil Fragrance
- Biodegradable plastic additive

Bar Soaps

- Free of chemical preservatives
- Olive oil and palm oil based
- Sulfate Free

We are Committed to our Customers as well as our Environment

**Diversified Hospitality Solutions is leading the trend
in environmentally friendly production.**

Diversified Hospitality Solutions has created quality guest amenities and hospitality accessories for properties ranging from cost conscious inns to 5-star resorts. We are delighted to serve with care and meticulous detail.

All of our lines are created with the environment and well-being of consumers as a top priority. We use vegetable-based formulas enriched with natural ingredients.

All of our products are 100% cruelty free, never tested on animals.

Our team of hospitality experts is committed to providing exceptional products and customer service. As a certified minority business we are proud to be supplying great properties across North America.



THIS CERTIFIES THAT

DIVERSIFIED HOSPITALITY SOLUTIONS, LTD



* Nationally certified by the: **PACIFIC SOUTHWEST MINORITY SUPPLIER DEVELOPMENT COUNCIL**

*NAICS Code(s): 423220; 423990; 423440

* Description of their product/services as defined by the North American Industry Classification System (NAICS)

02/02/2024

Issued Date

02/28/2025

Expiration Date

AZ01498

Certificate Number

A handwritten signature in black ink, appearing to read "Ying McGuire".

**Ying McGuire
NMSDC CEO and President**

A handwritten signature in black ink, appearing to read "Patricia Q. Crenshaw".

Patricia Crenshaw, President & CEO

By using your password (NMSDC issued only), authorized users may log into NMSDC Central to view the entire profile: <http://nmsdc.org>

Certify, Develop, Connect, Advocate.

* MBEs certified by an Affiliate of the National Minority Supplier Development Council, Inc.®



Diversified Hospitality is pleased to offer our beautiful, competitively priced stock lines and accessories. Goods are located in warehouses on both East and West coasts and are available for next day shipping. We also offer creative customization through our in-house graphic arts department.

We take great pride in providing exceptional service to our "family" of customers.

Thank you for the opportunity to work with you!

Diversified Hospitality Solutions

15950 Bernardo Center Drive, Suite O
San Diego, CA 92127
Phone (619) 312-0003
www.DiversifiedHospitality.com

